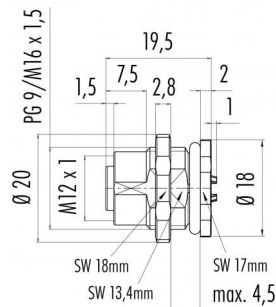


Product description	<b>M12-A female panel mount connector, Contacts: 5, not shielded, solder, IP68, UL, PG9, front mounting</b>
Area	<b>M12-A series 713</b>
Order number	<b>86 0532 1002 00005</b>

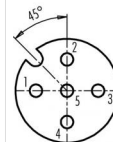
### Illustration



### Scale drawing



### Contact arrangement (Plug-in side)



	X	Y
1	-2,50	0,00
2	0,00	2,50
3	2,50	0,00
4	0,00	-2,50
5	0,00	0,00

- 1 braun/brown
- 2 weiß/white
- 3 blau/blue
- 4 schwarz/black
- 5 grau/grey

Geschirmte Versionen: Schirm auf Gehäuse  
Shielded versions: shield on housing

You can find the assembly instructions on the next page.

## Technical data

### General values

#### Notice

Please note that, due to the change from the old to the new order number, there may be deviations in the technical specifications. For questions about product details, please use the 'Contact Customer Service' form on the right.

female panel mount connector

screw

solder

0.34 mm<sup>2</sup>

22

85 °C

- 40 °C

85369010

20

Connector design

Connector locking system

Termination

Wire gauge (mm)

Wire gauge (AWG)

Upper limit temperature

Lower limit temperature

Customs tariff number

Packaging Unit

### Electrical values

Rated current (40 °C)

Rated voltage

Rated impulse voltage

Pollution degree

Overvoltage category

Insulating material group

Insulation resistance

EMC compliance

Degree of protection

Mechanical operation

4 A (3 A UL)

60 V

1500 V

3

II

III

> 10<sup>8</sup> Ω

not shielded

IP68

> 100 Mating cycles

### Material

Contact material

Contact plating

Contact body material

Housing material

REACH SVHC

CuSn (bronze)

Au (gold)

PA

Zinc die-cast nickel-plated

CAS 7439-92-1 (Lead)

### Cable data

Approval 1

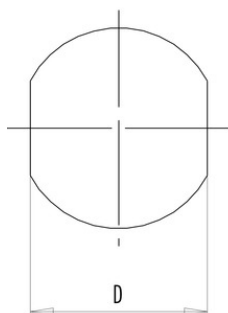
UL

Product description **M12-A female panel mount connector, Contacts: 5, not shielded, solder, IP68, UL, PG9, front mounting**

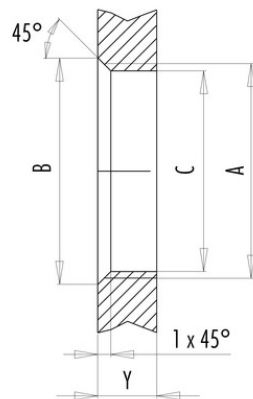
Area **M12-A series 713**  
Order number **86 0532 1002 00005**

## Assembly instructions / Panel cut-out

With flats as anti-rotation device



With bore hole



Installation direction:  
o-ring sits on chamfer.

Thread	Measures			Tightening torque	
	B (mm)	C (mm)	D (mm)	Metal housing/ Positioning sleeve	Plastic housing/ Positioning sleeve
PG 9	16,2	15,3	13,5	1,25 Nm	1,25 Nm
PG 11	20,2	18,7	17,0	2 Nm	–
PG 13,5	21,5	20,5	–	2 Nm	–
M12 x 0,5	–	12,1	–	–	0,4 Nm
M12 x 1	–	12,2	–	1 Nm	–
M14 x 1	15,2	14,2	–	1,25 Nm	–
M16 x 1,5	17,0	16,1	13,5	1,25 Nm	1,25 Nm
M20 x 1,5	21,0	20,1	–	2 Nm	1,25 Nm

Thickness of wall Y (mm)		
Version	min (mm)	max (mm)
Fastened from back side	2	3,5
Front fastened	2	4,5
Positioning possible <sup>1)</sup>	2	3,5
Screw clamp	2	3,5
Thread M12 x 1	2	3,0
Thread M14 x 1 <sup>2)</sup>	<sup>3)</sup> 1,5/ <sup>4)</sup> 2	6,5

### Notes

- <sup>1)</sup> Do not attach a chamfer
- <sup>2)</sup> Wall thickness:  
use locknut 01-5385  
up to 1,5 mm,  
>1,5 mm cut thread
- <sup>3)</sup> Nut
- <sup>4)</sup> Thread in wall of housing

Product description	<b>M12-A female panel mount connector, Contacts: 5, not shielded, solder, IP68, UL, PG9, front mounting</b>
Area	<b>M12-A series 713</b>
Order number	<b>86 0532 1002 00005</b>

## Security notices

The connector must not be connected or separated under load. Non-observance and incorrect use can result in personal injury.

The connectors are designed for use in plant, control system and electrical equipment. The end user is responsible for checking whether the connectors are suitable for use in other applications.

Connectors with degree of protection IP 67 and IP 68 are not suitable for use under water. When used outdoors, the connectors must be separately protected against corrosion. For further information about IP degrees of protection refer to 'Technical support' in the Download Centre.